

# Description of Changing Ball Bearings at Wind Transmitter 4.3303.22.xxx



## Remark

The mounting of ball bearings requires much care, know-how, and cleanliness in order to achieve an optimum capacity.

Incorrect mounting of ball bearings might challenge the value of even the best construction, and cause additionally costs in repair and maintenance.

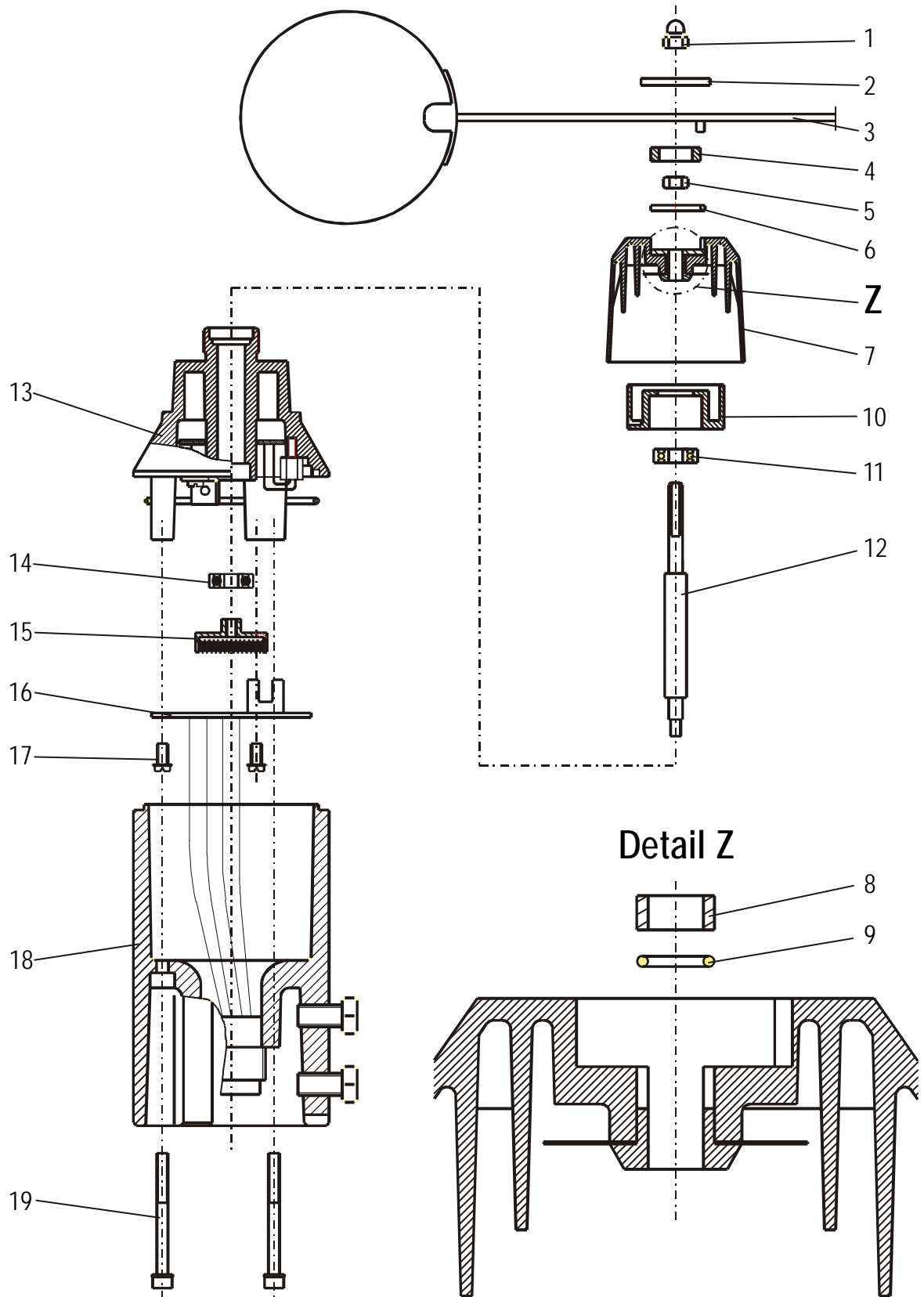
## Instruction for the correct mounting of ball bearings:

- For the mounting of ball bearings it is advisable to use a possibly dust-free room where there are no cut-workings or workings with compressed air..
- The ball bearings should be taken out of the packing only immediately before mounting.

## Mounting

1. Remove cap nut item 1 by means of a ring spanner or box spanner.
2. Remove disc item 2, cup star item 3, and gasket item 4.
3. Remove nut item 5 by means of a ring spanner.
4. Pull upwards and remove the complete protective cap item 7 – consisting of driving disc item 6, guide tube item 8, o-ring 5 x 1 item 9, and protective cap.
5. Remove counter ring item 10 by means of a hook spanner 3mm.
6. Remove the upper ball bearings item 11 (floating bearings).
7. Remove downwards screw item 19 three times by means of Allen-keys.
8. Lift receptacle item 13 and swing it aside
9. Remove three times screw item 17
10. Swing aside pc-board item 16.
11. Remove pot disc item 15 by means of special keys, and at the same time hold it on in the bench vice – stretching it on the surfaces.
12. Pull upwards axis item 12 and put it down.
13. Drive out the lower ball bearings item 14 by means of a thorn.
14. Clear sticking remainders off the seat of ball bearings by means of a reamer or triangular scraper; clean the surfaces with petroleum ether afterwards.
15. Coat the adhesive surfaces of the lower bearing seat with „*Loctite - Aktivator 7471*“ (050415) by means of a brush, and let it dry for approx. 15 – 30 min.
16. **IMPORTANT:**  
Ball bearings must be buildt-in under dust-free conditions, and without mechanical impact load.
17. Take the new ball bearings out of the packing, and clean the exterior surfaces of the bearings with petroleum ether – oil – and grease free.
18. Insert the ball bearings straight – not tilted – and stick it all round with „*Loctite 259*“ (050052), and let it dry for 1 to 2 hours afterwards.
19. Insert axis item 12 from above, and take care of centric position.

20. Put the 2 new ball bearings onto the axis and push it into the bearing seat; screw tight counter ring item 10 afterwards.
21. Tighten up pot disc item 15 by means of special keys, and lock thread with „Cyanolit“ (050007).
22. Mount pc-board item 16 on the receptacle.
23. Inspect o-ring 60 x 2 for pressure marks – replace in case of damages – grease o-ring with silicon grease „Notropeen SI 400 Medium“ (050358), and insert it.
24. Screw housing and receptacle together with screws item 19.
25. Renew o-ring 5 x 1 item 9 in protective cap, insert guide tube, and driving disc into protective cap, put it on axis, and tighten it with nut item 5, afterwards.
26. Inspect for axial play, insert gasket item 4, put on cup star and disc and tighten them with new cap nut item 1.





## **ADOLF THIES GmbH & Co. KG**

Hauptstraße 76      37083 Göttingen Germany  
P.O. Box 3536 + 3541      37025 Göttingen  
Phone ++551 79001-0      Fax ++551 79001-65  
[www.thiesclima.com](http://www.thiesclima.com)      [info@thiesclima.com](mailto:info@thiesclima.com)



- Alterations reserved -