

Instruction for use

020696/11/06

Precipitation Recorder

acc. to Hellmann

5.4010.../ 5.4011.../ 5.4015.../ 5.4016...



ADOLF THIES GmbH & Co. KG

Hauptstraße 76
Box 3536 + 3541
Phone ++551 79001-0
www.thiesclima.com

37083 Göttingen Germany
37025 Göttingen
Fax ++551 79001-65
info@thiesclima.com

Contents

1	Models available	3
2	General Information	3
3	Construction.....	3
4	Preparing for use	4
4.1	Installation of the instrument	4
4.2	Putting the instrument into operation.....	4
5	Maintenance	5
5.1	Changing the recording pen	5
5.2	Changing the recording strip	5
5.2.1	Drum recorder.....	5
5.2.2	Strip chart recorder	6
5.3	Changing the battery	6
5.4	Cleaning the system.....	7
5.5	Verifying display accuracy.....	7
6	Technical Data.....	7
7	Dimensions	8
8	Connecting diagram.....	8
9	Spare parts	9

1 Models available

Order - no.	Recording time	Thrust
5.4010.xx.000	7 days	55 mm/ day
5.4011.xx.000	24 hours	16 mm/ hour
5.4015.xx.000	31 days	10 mm/ hour
5.4016.xx.000	31 days	20 mm/ hour
	Heating	Ambient temperature
..10...	none	0...+60°C
..16...	250 VA	-20...+60°C
..17...	270 VA with funnel heating	-30...+60°C

2 General Information

This instrument is designed to measure and record precipitation as rain, snow, hail etc. striking the earth's surface.

For winter operation, it must be equipped with an electric heater. This heater, regulated by a thermostat, prevents the instrument from freezing and melts the snow.

The materials used in the construction (brass, Al alloy) have all been chrome-plated or varnished as corrosion protection. This guarantees a long operating life. The varnished case is made of stainless steel (V2A).

3 Construction

At the top of the case, there is a set collar with a collector surface of 200 cm². Below this, you will find the collecting funnel with the dirt filter to catch coarse dirt. The measuring and recording unit is mounted to a plate in the case. The rain entering the collecting funnel is channelled into a hose which carries it to a flushing tank. The swimmer indicates the water level which is recorded with the aid of a pen on a recording arm onto a recording roll/chart. Time-dependent registration is made possible by a battery- or spring wound operated transport clockwork. When the tank is filled to its maximum level, it is automatically emptied through a siphon. The rain water is collected in a collecting vessel.

The case has been provided with a bolt lever lock. Additional protection against tampering by unauthorized persons can be provided by a padlock.

4 Preparing for use

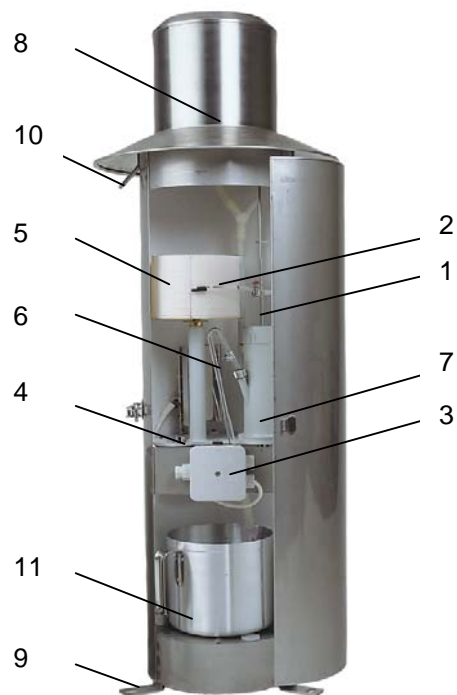


Abb. 5.4010/11

4.1 Installation of the instrument

The instrument must be set up on a plane surface such that it is accessible to precipitation from all sides. Building and trees must be at a distance at least equal to their respective heights.

Set the precipitation recorder onto a base plate and screw the feet to this plate. Care should be taken that the **bubble level (4)** in the instrument indicates a horizontal position. If necessary, balance the instrument by placing levelling pieces under the **feet straps (9)**. For using the instrument vibration free in stormy areas, you can secure the case additionally by means of wires through the 3 **upper straps (10)**.

Make sure, that the area for opening the door of the instrument is free of the wires.

Afterwards put the **dirt filter (8)** into the collecting funnel.

4.2 Putting the instrument into operation

Once you have set the instrument up and removed the transport securing device on the **cover of the flushing tank (1)**, swing the **recording arm (2)** forwards until it is stopped by the plate spring. For drum recorders 5.4010/11.. , wind the clockwork with the key you will find in the drum. The **clockwork (5)** itself is found (packed) in the lower part of the case. Unscrew the knurled nut on the axis, insert the clockwork onto the axis and screw it into place. Then return the recording arm to the clockwork and rotate the drum clockwise until the tip of the recording pen points to the appropriate day and time mark on the chart.

With continuous line recorder 5.4015/16... (w/o figure) the driving mechanism is a battery-operated quartz clockwork mechanism. It can be switched on by setting the switching lever to the green point (see 5.2.2).

Rotate the chart with the set wheel until the recording pen is on the true time marking. Enter the date onto the chart by hand.

Insert the enclosed **siphon (6)** into the lateral nozzle of the **flushing tank (7)** until it catches (clamp) and screw it into place. First of all, put the enclosed 50-m-hose onto the lower end of the siphon. Now slowly put just enough water into the collector opening to make the flushing tank empty itself. Now the recording pen will point exactly to the zero point on the chart.

For instrument with heaters, you will have to provide an **electrical connection (3)**. The built-in thermostat switches the heater on automatically at about +5 °C. The instrument can not be used in below freezing weather without the heater.

During such weather, remove the flushing tank and the clockwork from the precipitation recorder and store them in a suitable place.

Evaluating the recording strip

In order to determine the amount of precipitation during a given period of measurement, it will be necessary to measure the precipitation level both at the beginning and the end of the measurement period. The difference between these two values represents the amount of precipitation per measurement period. Don't forget to include the recorded siphoning off (10 mm) in your calculations.

After a longer period of dryness, the recording pen tends to somewhat exceed the 10 mm mark before siphoning off.

Dust and dirt may have affected the adhesion conditions within the siphon. If the instrument is exposed to heavy rainfall or to vibrations, the precipitation may be siphoned off before the 10 mm mark.

5 Maintenance

5.1 Changing the recording pen

Carefully remove the used felt pen from the recording arm. Take the tip protector of the new pen off and insert this pen onto the recording arm. Never touch the tip of the pen and never attempt to write with the felt pen by hand.

5.2 Changing the recording strip

5.2.1 Drum recorder

If the drum is selectable, swing the selecting switch to the left for 1 day recording time or to the right for 7 days recording time.

The recording chart must be changed once a week if set to 7 day operation, once a day if set to 24-hour operation.

After swinging the recording arm forward, unscrew the knurled nut on the drum axis, raise and wind the clockwork. Then remove the chart holder and lift the chart from the drum. Make sure that the new recording chart always fits to the lower edge of the drum.

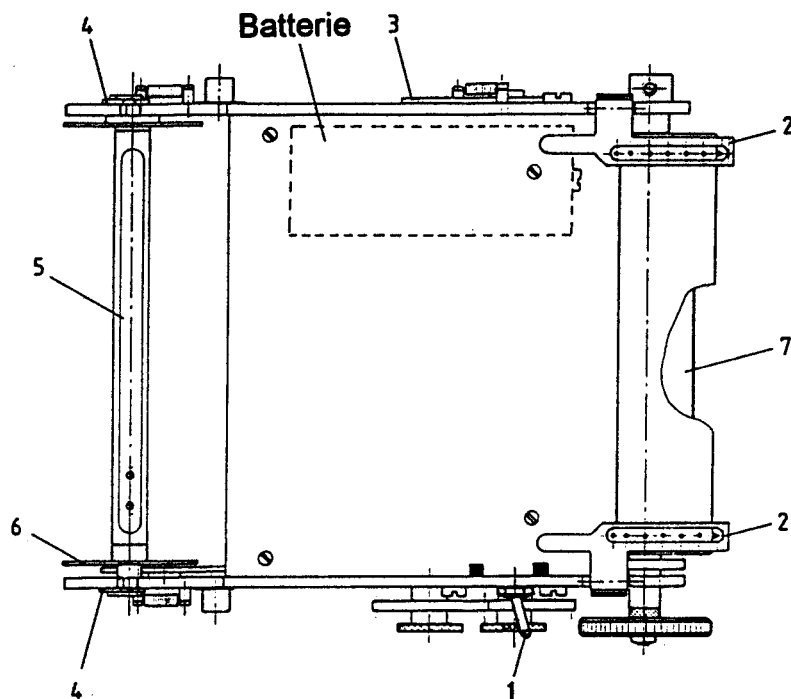
Replace the chart holder to secure the recording chart.

When the clockwork has been re-inserted, the recording arm returned to its operating position and the drum rotated to the correct time, the instrument is again ready for use.

5.2.2 Strip chart recorder

In these recorders, the recording strip chart has to be changed once every 31 days at the latest. This can be done as follows:

Raise both recording strip holders (2), press the stopping lever to the left and tilt out the clockwork table. Remove the winding spool (5) which is held by two latches (4) and then remove the limit disk (6) to withdraw the paper roll. Place the new roll of recording paper onto the spare spindle (7) and insert it, feed the recording strip over the spiked rollers, tilt the clockwork mechanism table back into its original position and lock it into place. Then fold the end of the recording strip at an angle, clamp it beneath the spring of the winding spool and advance it a bit. After the winding spool has been inserted, return the recording strip holders back to their original position and set switching lever (1) to „green“. Once the recording pens have been swivelled back into position and the true time set, the instrument is once again ready to resume operation.

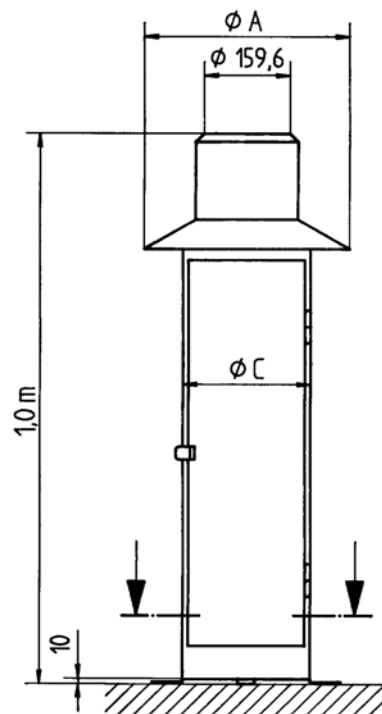


5.3 Changing the battery

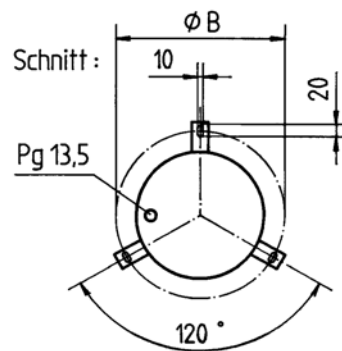
The battery of the continuous line recorder has an operating life of 9 months up to 0 °C in normally climatic condition. In order to make sure that the transport mechanism does not unexpectedly stop, thus leading to a loss of recordings, change the battery after 6 months of use at minus temperatures up to – 20°C.

Type of battery : MN 1300 M3 (Ultra), Fa. Duracell.

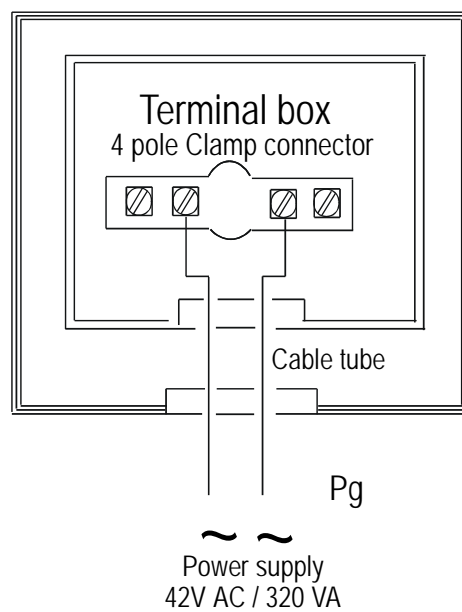
7 Dimensions



Order no.	5.4010... 5.4011...	5.4015... 5.4016...
ϕA	370	485
ϕB	304	449
ϕC	230	375



8 Connecting diagram



9 Spare parts

Model	Order-no.	Remarks
Fibre tipping pen	500847	min. order 6 pieces
Recording strip 7 days	205243	100 sheets
Recording strip 24 hours	205245	100 sheets
Recording roll 31 days ; 10 mm/h	205247	min. order 12 rolls
Recording roll 31 days ; 20 mm/h	205248	min. order 12 rolls



ADOLF THIES GmbH & Co. KG

Hauptstraße 76 37083 Göttingen Germany
P.O. Box 3536 + 3541 37025 Göttingen
Phone ++551 79001-0 Fax ++551 79001-65
www.thiesclima.com info@thiesclima.com



- Alterations reserved -